

How to replace power belt

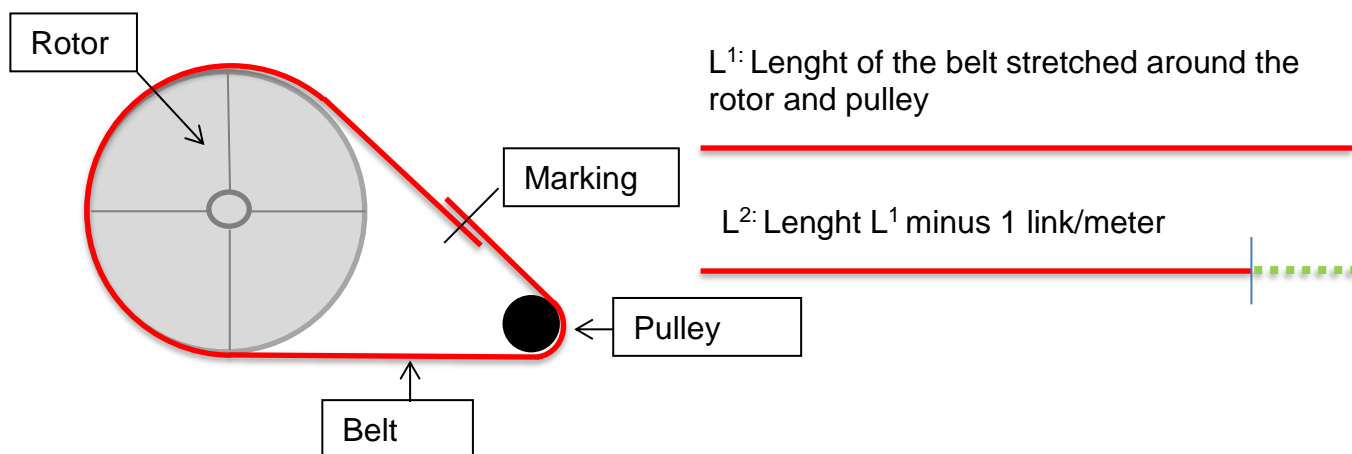
This instruction is developed with the aim of everybody using the same settings, procedures and tolerances, to ensure a worldwide and uniform high quality, for all of our products. Other included operations for Daily maintenance of How to replace power belt will be added on request and by demand.

Subtitle

Content

1	Stretch the belt	- 2 -
2	Final assembly	- 2 -
3	Put on the belt on pulley	- 6 -

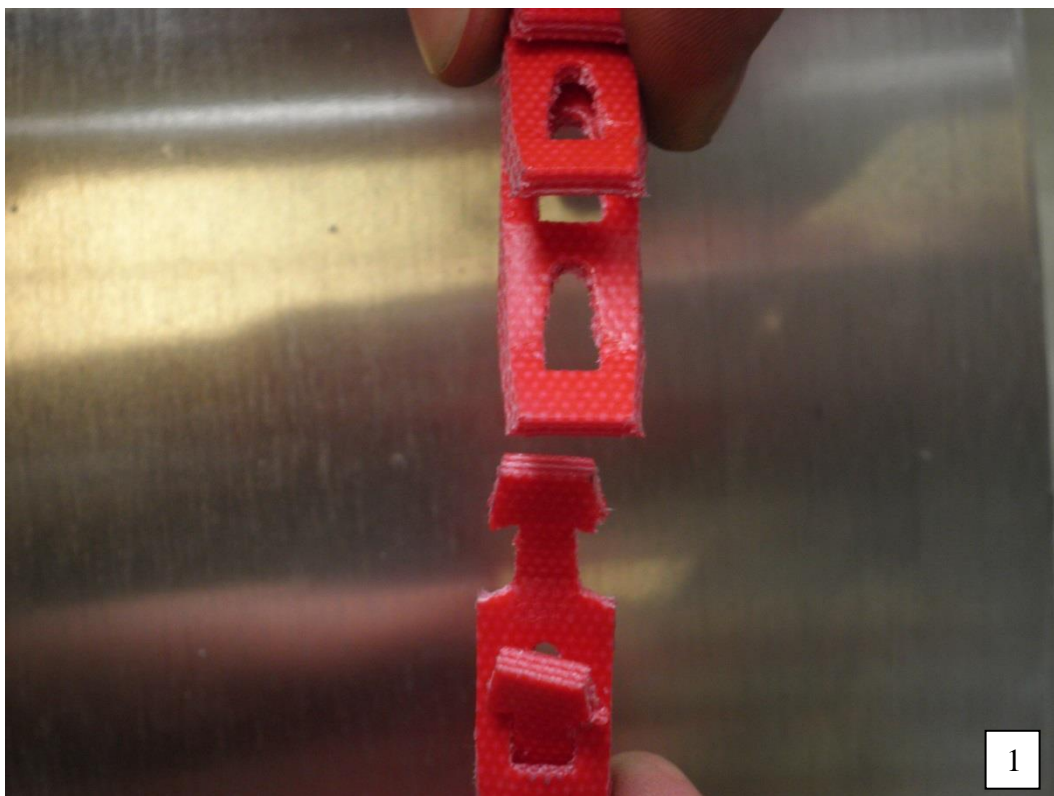
1 Stretch the belt



Make sure that:

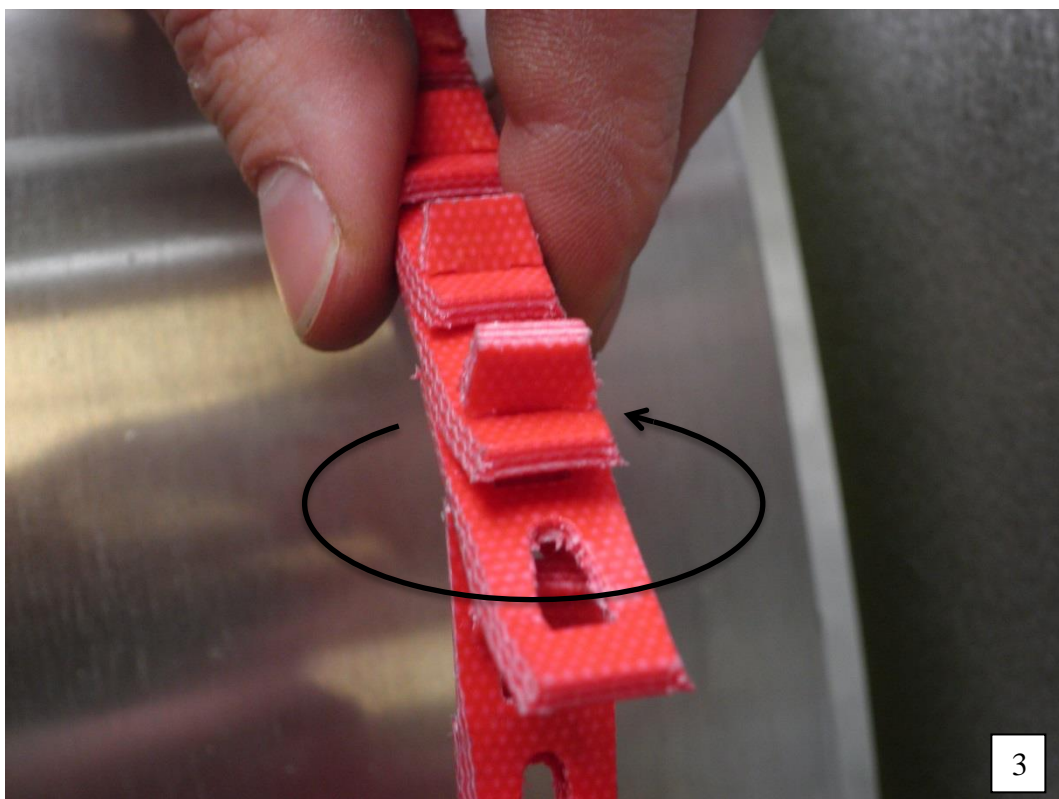
- that the belt doesn't run on top of the brush guard
 - measure the circumference of the wheel by:
 $\text{Circumference} = \text{Ø} * \pi$ E.G. $2500 * 3,14 = 7850$
- Remove 1 link/m belt E.G. 7,8 links=8 links from L^1 to receive L^2

2 Final assembly

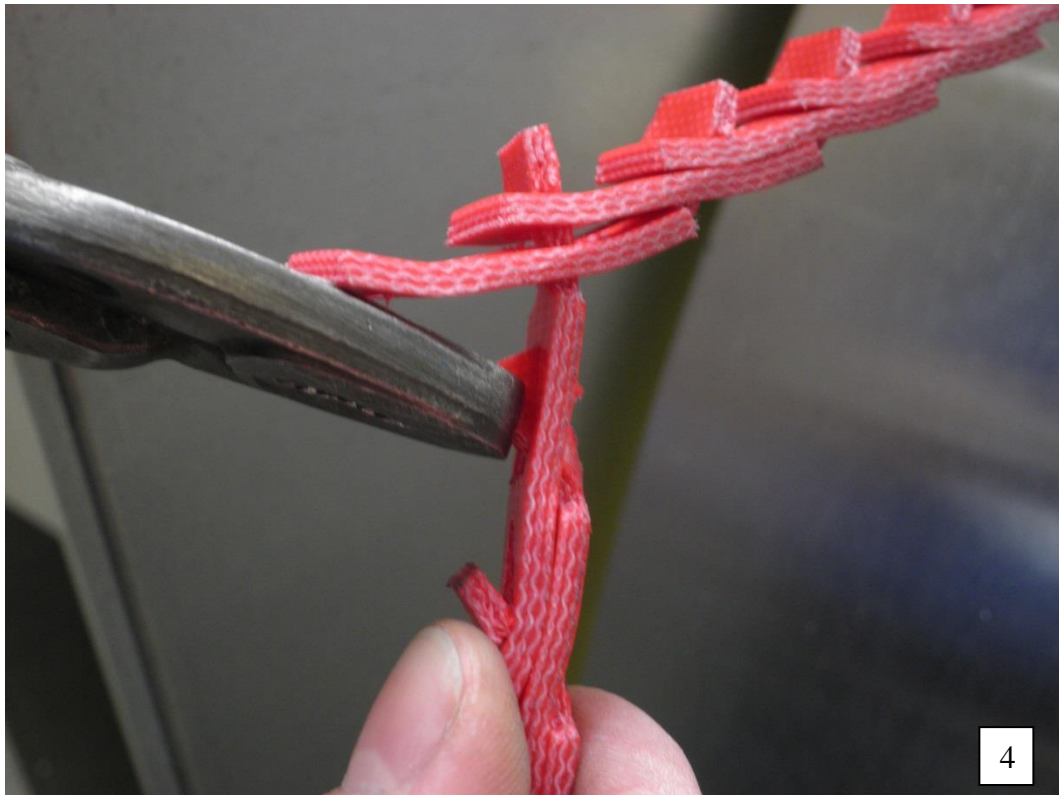




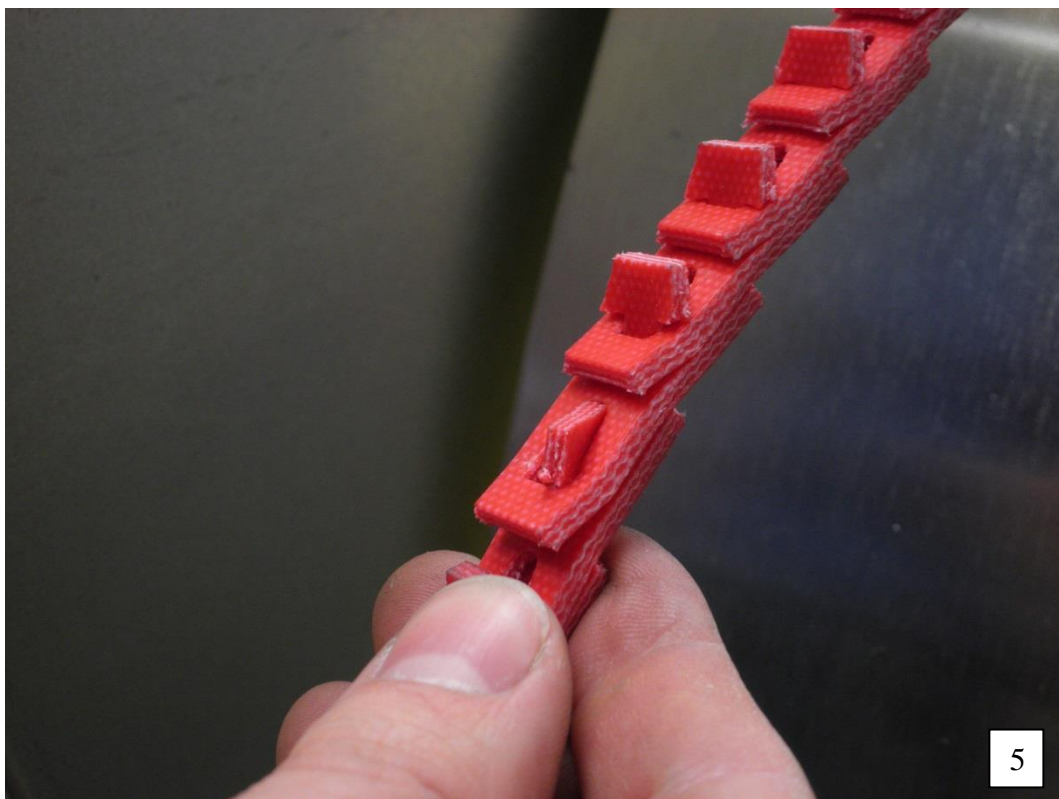
Turn the link and pull the hole.



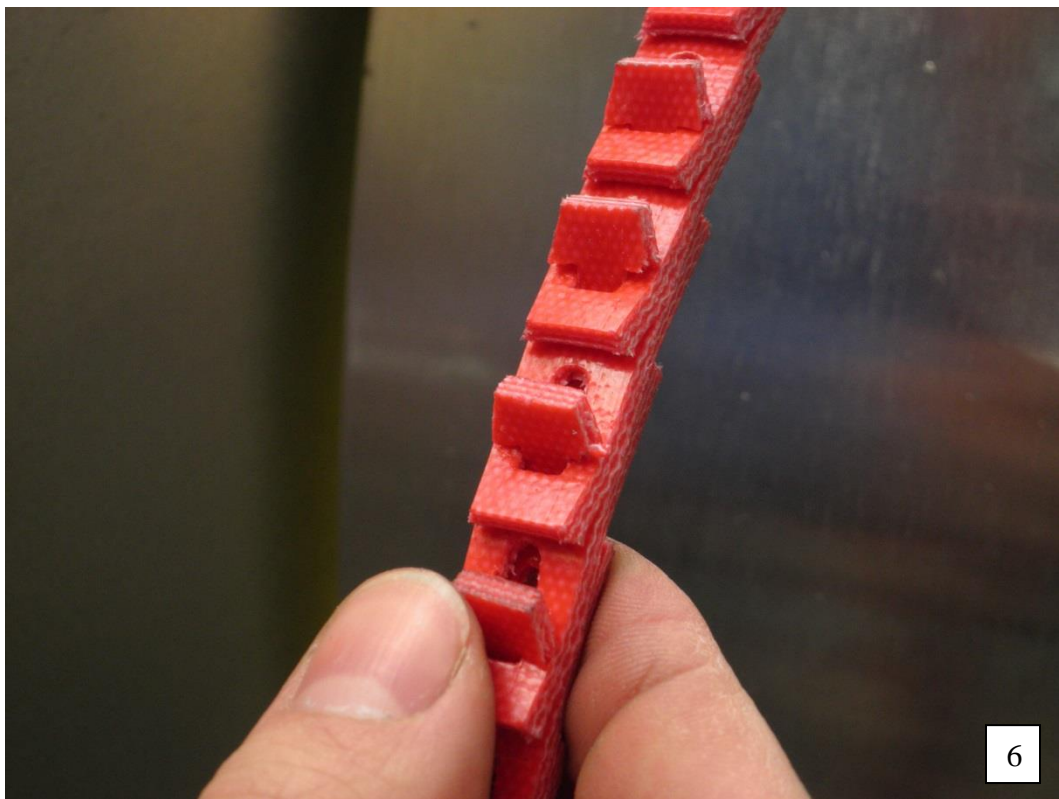
Turn the link into "lock position".



Use pliers to turn the link and pass it through the hole

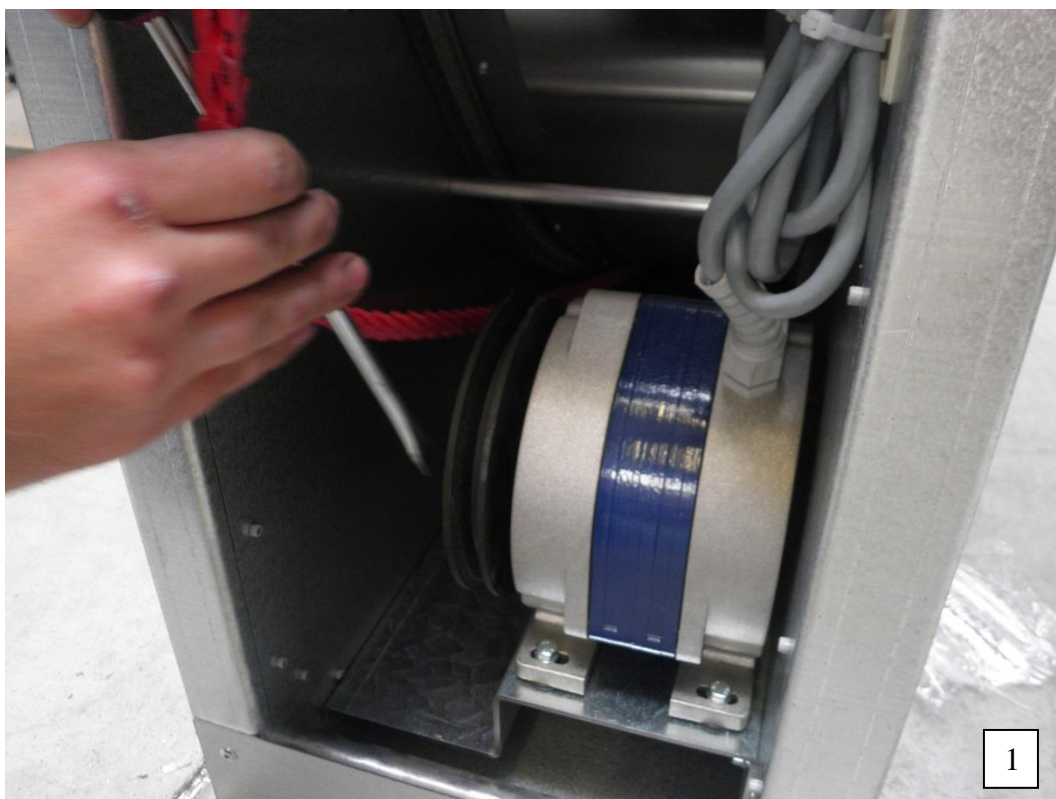


Using pliers pull the link and secure it against displacement by turning it into “lock position” (see picture 6).



The final form of joint.

3 Put on the belt on pulley



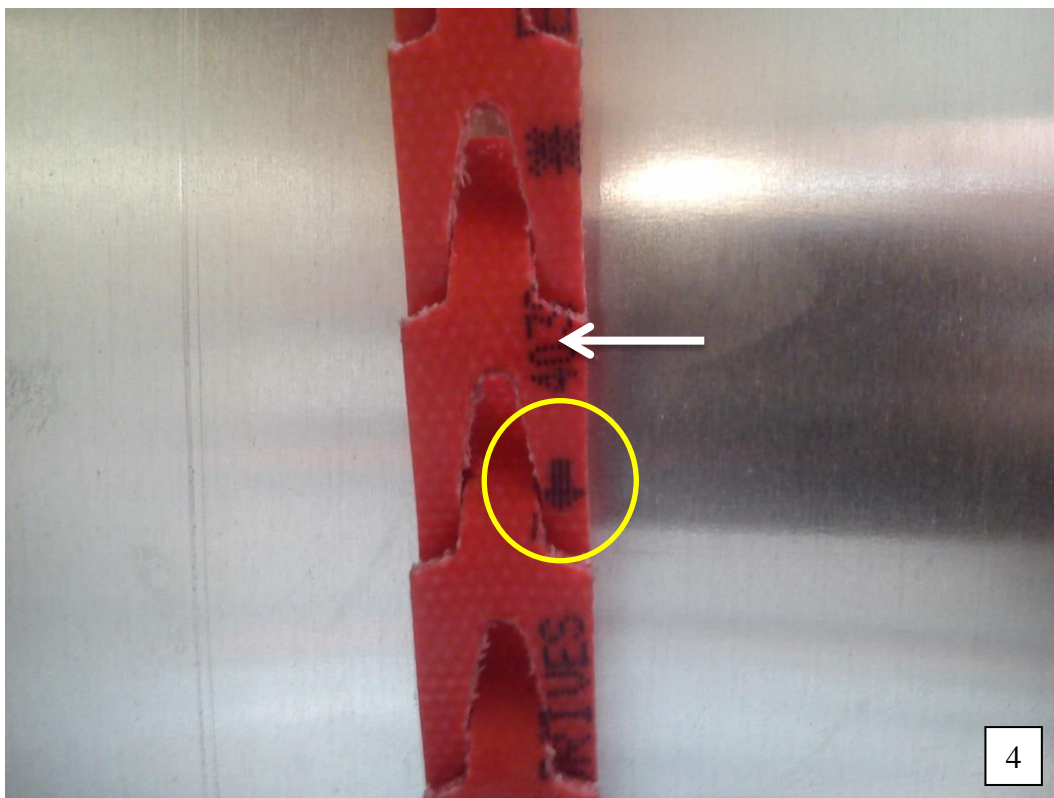
Use screwdriver as you can see on picture above.



With the creation of the lever, push the belt on the pulley.



After placing the belt on a pulley turn the wheel several times to the belt properly settled.



Make sure that the flat side runs on the wheel (white arrow) and the other side runs in the pulley. This means that the belt is turning just before going into the pulley and after the pulley it turns back again. Point the arrow (marked by yellow circle) on the belt at the direction of rotation of the drive.